



RDE (RDES) Series Valve

**Technical passport**

## Content

1. Purpose
2. Basic technical data of valves
3. Complete set
4. Design of valves
5. Safety measures and installation of the product
6. Product storage and transportation
7. Certification information
8. Warranty conditions
9. Information about complaints
10. Certificate of acceptance
11. Information on disposal

This passport is a combined operating document for air valves of the RDE (RDES) series (hereinafter referred to as "valves"). The passport contains information that confirms the manufacturer's warranty, the value of the main parameters and characteristics of the product, information necessary for correct and safe operation, as well as information on certification and disposal of the product.

### 1. Purpose

Air valves are designed to regulate the flow of air and explosive gas mixtures passing through the air duct channel or to block the ventilation channel. Valves are used in an environment whose aggressiveness, in relation to carbon steels of ordinary quality, is not higher than the aggressiveness of air, which has a temperature from minus 30 ° C to plus 60 ° C, does not contain sticky, fibrous and abrasive materials, with the content of dust and other solid impurities more than 100 mg/m<sup>3</sup>. The valve can perform the function of both cut-off and regulation.

### 2. 2. Basic technical data of valves

2.1 Overall dimensions are given in Table 1 and Fig. 1. The aerodynamic characteristics of the valves are shown in Fig. 2

Table 1 – Overall dimensions of valves

Type	D,(mm)	f,(mm)	L,(mm)
RDE 125	125	100	280
RDE 160	160	100	280
RDE 200	200	100	280
RDE 250	250	115	280
RDE 315	315	140	365

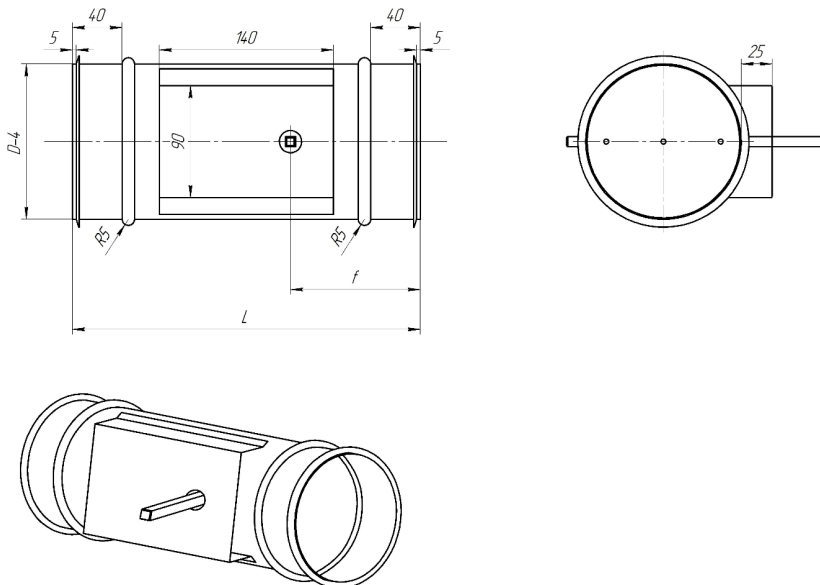


Fig. 1 – Overall and connecting dimensions

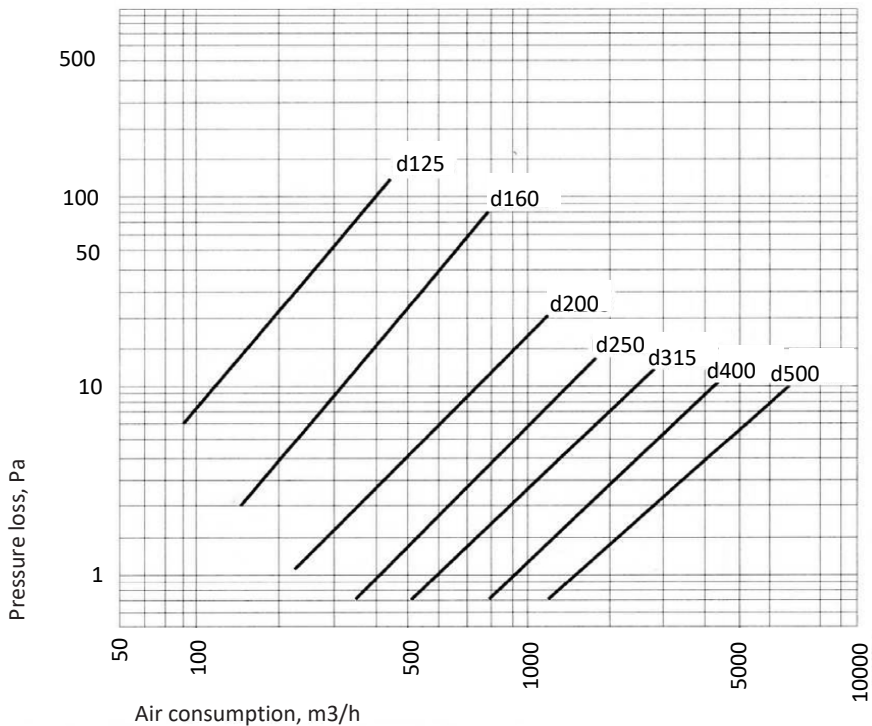


Fig. 2 - Aerodynamic characteristics of valves

## 2.2 Technical data of the electric drive

The RDE valve is equipped with a Siemens GSD341.1A electric drive. The RDES valve is equipped with a Siemens GQD321.1A return spring electric drive. Technical characteristics of the actuators and electrical diagrams are given in Table 2 at the end of the document.

## 3. Complete set

Name	Number	Notes
Air valve	1	
Passport of the Valve	1	
Drive	1	

Note: Spare parts and tools are not included

#### **4. Design and principle of operation of valves**

The valve consists of a body, in the upper wall of which a rotary plate - lamella - is fixed. The body is made of galvanized steel. The RDE valve vane has 2 or 3 operating positions depending on the actuator connection. The RDES valve blade has only 2 operating positions. The vanes are equipped with a rubber gasket, which increases the density of the damper in the closed position. The damper can be mounted in any position.

*Note: Changes can be made to the design of the dampers, without impairing its consumer properties and not taken into account in this passport.*

#### **5. Installation and safety measures**

5.1 The installation and operation of the Valves is allowed by persons who have been familiarized with the following passport and have been instructed in the rules of compliance with safety techniques.безпеки

5.2 Valves must be installed in accordance with the requirements of DSTU B A.3.2-12:2009, DSTU-H B V.2.5-73:2013, project documentation and the following passport.

5.3 Inspect the Valve. If damage or defects resulting from improper transportation or storage are detected, installation is not allowed without agreement with the selling company.

5.4 When operating the fan, the requirements of GOST 12.3.002-75, DSTU B A.3.2-12:2009 and the following passport should be observed.

#### **6. Storage and transportation of the product**

6.1 Preservation valves are not susceptible.

6.2 Valves are transported assembled without packaging.

6.3 Valves can be transported by any type of transport, which ensures their preservation and excludes mechanical damage, in accordance with the rules of cargo transportation, which apply to this type of transport.

#### **7. Certification information**

7.1 The conclusion of "UkrTEST" of SE "Ukrmetrteststandart" confirmed that the product is not included in the "List of products subject to mandatory certification in Ukraine", as well as "List of products whose conformity can be confirmed by a declaration of conformity"

7.3 The galvanized steel of the valve body is confirmed by a quality certificate.

7.4 The quality of production is guaranteed by the management system applied to factory, in accordance with ISO 9001: 2015.

## 8. Warranty conditions

"VENT-SERVICE" Limited Liability Company, hereinafter the Manufacturer guarantees the compliance of the Valve with the requirements of the technical documentation, subject to the consumer's compliance with the rules of transportation, storage, installation, adjustment and operation, provided that installation and commissioning work is performed by a specialized organization that has the appropriate manufacturer's permit.

Warranty obligations are fulfilled under the conditions specified below:

### 8.1 Warranty period

8.1.1 The warranty period for the Valve is 36 months from the date of delivery of the equipment to the consumer, but no more than 42 months from the date of manufacture.

8.1.2 The date of delivery to the consumer is considered the date of issuance of the invoice by the Distributor.

### 8.2 Warranty conditions

8.2.1 During the warranty period, the manufacturer undertakes to eliminate equipment malfunctions that occurred as a result of factory defects of the Valve or its parts and elements.

8.2.2 The basis for consideration of claims regarding the fulfillment of warranty obligations is Complaint.

The procedure for filing and content of the Complaint are specified in section 10 of the following Passport.

8.2.3 The manufacturer independently decides whether the Valve, its defective parts should be replaced or whether they should be repaired on site.

8.2.4 The performed warranty service does not extend the warranty period, the warranty on the parts that were replaced ends with the expiration of the warranty on the Valve

8.2.5 These warranty conditions are valid for all contracts regarding the purchase of the Manufacturer's Valve, unless otherwise specified in these contracts.

8.3 These warranty obligations do not apply to:

8.3.1 Equipment parts and operational materials subject to natural physical wear and tear.

8.3.2 Valve damage caused by:

a) entry of foreign objects or liquids into the Valve,

b) natural phenomena,

c) environmental impact,

d) animal activities,

e) all mechanical damage and breakdowns that occurred as a result of non-compliance with the recommendations and requirements of the documentation, which includes the following passport, norms, standards and rules of installation work.

8.3.3 Various modifications, changes in operating parameters, modifications, repairs and replacement of parts of the Valve, which were carried out without the consent of the Manufacturer or its Distributor.

### 8.4 Warranty works

8.4.1 Works under this guarantee are carried out within 14 days from the date of submission of the complaint. In exceptional cases, this period is extended, in particular when it takes time to deliver parts or in the event that the service is not available at the facility.

8.4.2 The parts that the service workers dismantle from the Valve as part of the warranty repair and replace them with new ones are the property of the Manufacturer.

8.4.3. Expenses arising from unfounded complaints or due to interruptions in service works at the request of the claimant, the claimant himself bears. Repairs are priced according to the prices for service services established by the Distributor or Manufacturer.

8.4.4 The manufacturer has the right to refuse to perform warranty work or service if the customer delays payment for the equipment or for previous service work.

8.4.5 The client assists service workers in carrying out repair work at the location of the equipment:

- a) prepares access to the product and documentation at the appropriate time.
- b) ensures the protection of the service department and its property, as well as compliance with all requirements of labor protection and safety equipment at the place of work.
- c) creates conditions for the immediate start of work immediately after the arrival of service workers and carrying out work without any obstacles,
- d) provides free of charge the necessary assistance during work, for example, provides lifts, free sources of electricity.

8.5 The client is obliged to accept the performed warranty works immediately after their completion and to confirm this in writing in the act of performed works, a copy of which he receives.

## 9. Information about complaints

9.1 Acceptance of products is carried out by the consumer in accordance with the "Instructions on the procedure for accepting products for industrial and technical purposes and consumer goods by quality".

9.2 If inappropriate quality is detected, the consumer is obliged to send a complaint to the Distributor, which is the basis for resolving the issue of the legality of the claim presented. The list of distributors and their contact information is given on the page aerostar.ua.

9.3 Complaints to the Distributor should be submitted in writing. Complaints can be submitted by fax or e-mail. The complaint must contain the type, factory number, invoice number and date of delivery of the Valve, as well as the address of its installation location, telephone numbers and name of the responsible person. The complaint must also include a description of the problems with the Valve and (if possible) the names of the damaged parts.

9.4 If the consumer (customer) violates the rules of transportation, acceptance, storage, installation and operation, claims regarding quality will not be accepted.

## 10. Certificate of acceptance

Valve series \_\_\_\_\_, factory number \_\_\_\_\_,  
prepared and accepted in accordance  
with the requirements of TU U 28.2-35851853-007:2021

---

Signature

Surname

Date

## 11. Information on disposal

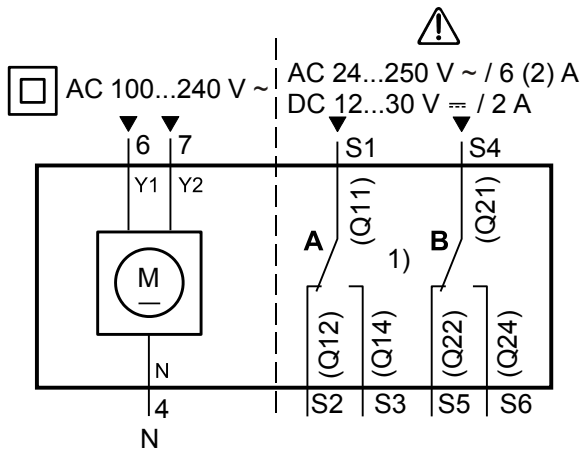
11.1 Special work on disposal of the product after the end of the service life is not foreseen.

11.2 The valve body is recommended to be reused as scrap metal, the sound-absorbing material should be disposed of at a solid waste landfill.

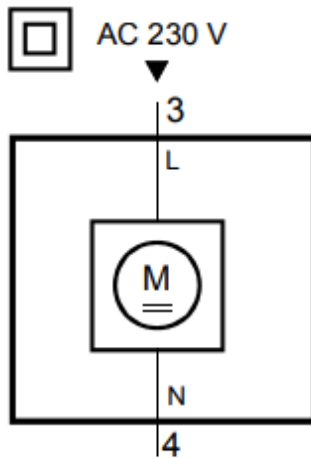
Parameter names	Siemens GSD341.1A	Siemens GQD321.1A
Power, W	1,8	4,5
Dimensions, WxHxD, mm	73x122x63	73x122x63
Protection class, IP	54	40
Torque, Nm	2	2
Turn time, sec	30	30
Angle of rotation, °	90	90
Voltage, V	230	230
Control	2/3 positional	2-position
Operating temperature, °C	From -32 to +55	From -32 to +50
Cable length, m	0,9	0,9

Table 2 - Technical characteristics of drives





GSD341.1A



AC 0 V

GQD321.1A

VENTSERVICE LLC  
03061, Kyiv,  
95 A2, Otradny ave  
tel.: (044) 594 71 08  
aerostar.ua